

FLORIDA CLUB P.U.D. PHASE II & IIA

A PLANNED UNIT DEVELOPMENT

A PARCEL OF LAND BEING PART OF LOTS 9, 10, 12, 13 AND 16, TROPICAL FRUIT FARMS,
RECORDED IN PLAT BOOK 3, PAGE 6, PALM BEACH COUNTY, (NOW MARTIN COUNTY)
LYING IN SECTIONS 7 AND 8, TOWNSHIP 39 SOUTH, RANGE 41 EAST

MARTIN COUNTY, FLORIDA
SHEET 4 OF 4 FEBRUARY, 1998

CLERK'S RECORDING CERTIFICATE
I, MARSHA STILLER, CLERK OF THE
CIRCUIT COURT OF MARTIN COUNTY,
FLORIDA, HEREBY CERTIFY THAT
THIS PLAT WAS FILED FOR RECORD
IN PLAT BOOK 14
PAGE 471
MARTIN COUNTY, FLORIDA,
PUBLIC RECORDS, THIS 17 DAY
OF March 1998

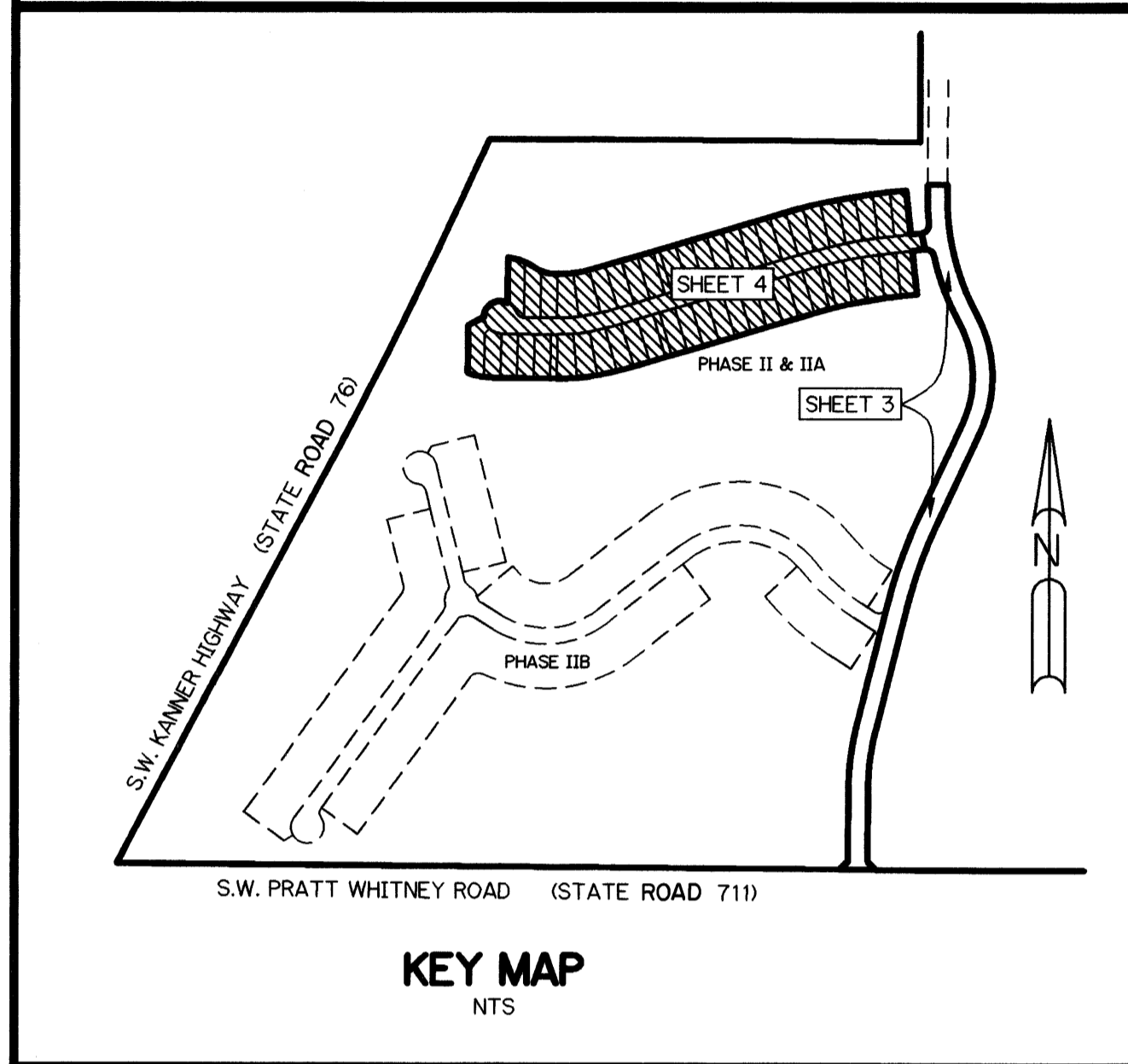
MARSHA STILLER, CLERK
CIRCUIT COURT
MARTIN COUNTY, FLORIDA

BY: *David Wood*
DEPUTY CLERK

FILE NO.
01285386
(CIRCUIT COURT SEAL)

NOTES

- ALL LOT LINES ARE NON-RADIAL UNLESS OTHERWISE SHOWN.
- THERE SHALL BE NO BUILDING OR ANY OTHER KIND OF CONSTRUCTION OR TREES OR SHRUBS PLACED ON DRAINAGE EASEMENTS.
- THERE SHALL BE NO BUILDING OR OTHER PERMANENT STRUCTURES OR TREES OR SHRUBS PLACED ON UTILITY EASEMENTS.
- BEARING BASE - THE SOUTH LINE OF SOUTHWEST 1/4 OF SECTION 8 IS TAKEN AS BEING NORTH 89°55'52" WEST AND ALL OTHER BEARINGS ARE RELATIVE THERETO.
- THIS PLAT AS RECORDED IN ITS ORIGINAL FORM IN THE PUBLIC RECORDS, IS THE OFFICIAL DEPICTION OF THE SUBDIVIDED LANDS DESCRIBED HEREON AND WILL, IN NO CIRCUMSTANCES BE SUPPLANTED IN AUTHORITY BY ANY OTHER FORM OF THE PLAT, WHETHER GRAPHIC OR DIGITAL.
- IN THE EVENT THAT MARTIN COUNTY DISTURBS THE SURFACE OF A PRIVATE STREET DUE TO MAINTENANCE, REPAIR OR REPLACEMENT OF A PUBLIC IMPROVEMENT LOCATED THEREIN, THEN THE COUNTY SHALL BE RESPONSIBLE FOR RESTORING THE STREET SURFACE ONLY TO THE EXTENT WHICH WOULD BE REQUIRED IF THE STREET WERE A PUBLIC STREET, IN ACCORDANCE WITH COUNTY SPECIFICATIONS.
- NOTICE: THERE MAY BE ADDITIONAL RESTRICTIONS THAT ARE NOT RECORDED ON THIS PLAT THAT MAY BE FOUND IN THE PUBLIC RECORDS OF MARTIN COUNTY.



TROPICAL FRUIT FARMS
P.B. 3, PG. 6 (PALM BEACH COUNTY, NOW MARTIN COUNTY)

